



Bellevue Public Schools

2024 Annual Report

Table of Contents

District Leadership.....	1
Our Board of Education.....	1
From Our Superintendent.....	1
Our Mission, Vision, & Beliefs.....	2
BPS Strategic Plan.....	3
Strategic Plan Objectives.....	3
Purple Star School Designation.....	5
District Finances.....	6
BPS Bond Initiative.....	7
2016 BPS Bond Initiative.....	7
By the Numbers.....	8
Teaching and Learning.....	11
Elementary School.....	11
Middle School.....	11
High School.....	11
Technology.....	12
Blended Learning.....	12
One-to-One iPads.....	12
Schoolology and Core Apps.....	12
Programs.....	13
Academic Center of Excellence (A.C.E.).....	13
Frank Kumor Career Center.....	13
Special Education.....	14
Birth-3 years old Services.....	14
Preschool.....	14
CHAP Center.....	14
Bellevue Expanding Student Transitions Program (B.E.S.T.).....	14
Project SEARCH at Nebraska Medical Center Bellevue.....	15
Bellevue Public Schools Early Childhood Center.....	15
Child Find.....	15
Unified Sports.....	15
English Learner Program (EL).....	15
National Center for Family Literacy Program.....	16
STEM.....	16
High Ability Learner (HAL).....	16
Advanced Placement & Dual Enrollment.....	16
Metro Career Academy.....	16
UNMC Health Alliance.....	16
Henry Doorly Zoo Academy.....	17
Air Force Junior Reserve Officers' Training Corp (JROTC).....	17
Co-curricular Organizations & Clubs.....	17
Extra-curricular Activities.....	17
Grant-funded Programs.....	18
Department of Defense Educational Activity (DoDEA).....	18
Project Shape Up.....	18
Operation Taking Flight.....	19
Project Career Launch.....	19
IMProving Access, Curriculum, Training for World Languages.....	19
Partnerships.....	20
Connect with us.....	21
There's an app for that!.....	21
Notice of Non Discrimination.....	21
2024 Annual Report.....	21

District Leadership

Our Board of Education

The governing body of the Bellevue Public Schools is the Bellevue Board of Education. Maureen McNamara, President, is a retired teacher/principal/administrator who served BPS for 35 years; Scott Eby, Vice President, is in Business Development for CKF; Patrice Beckham is a consulting actuary for Cavanaugh Macdonald Consulting; Phil Davidson is the Community Relations Coordinator for the City of Bellevue; Matt Goetz is the Program Director at Bellevue Junior Sports Association (BJSA) for over 25 years; and Nina Wolford is a retired English teacher who taught in Bellevue for 31 years.

In addition, Col. Mark Howard, Commander of the 55th Wing at Offutt Air Force Base, sits as an advisory member to the Board and represents Offutt personnel. Dr. Jeff Rippe is BPS' Superintendent and is responsible for the day-to-day operation of the school district and carrying out the policies and regulations of the Board.

From Our Superintendent

As "Champions for Children," the Bellevue Public Schools Board of Education and staff envision a school system that shapes the lives of our students through engagement, innovation, and a culture of belonging.

Bellevue Public Schools is proud to provide quality educational opportunities to students of military-connected families and civilians who serve our country at Offutt Air Force Base. Offutt is the home of the 55th Wing, including the following tenant units: U.S. Strategic Command, the 557th Weather Wing, Heartland of America Band, Defense POW/MIA Accounting Agency, the 595th Command and Control Group, and other vital missions critical to our Nation's defense.

Bellevue Public Schools is also a choice destination for over 1,100 students from across the Omaha Metro area who choose to enroll and engage in our quality academic and extracurricular programs.

The BPS Annual Report provides stakeholders a glimpse of our district's fantastic work and success. If you would like to learn more about our district, please visit our website at www.bellevuepublicschools.org.



Dr. Jeff Rippe
Superintendent of Schools

Our Mission, Vision, & Beliefs

Mission

Champions for Children

Vision

Shaping Our Future Through Engagement, Innovation, and a Culture of Belonging.

Beliefs

Bellevue Public Schools and stakeholders believe in...

- Learning for all
- Exposing students to rigorous academic programs and meeting individual needs
- Implementing effective use of technology to enhance teaching and student learning
- Preparing our students to persevere and face the challenges of living and learning in an ever-changing world
- Respecting diversity and helping students understand their roles as responsible citizens
- Providing a safe and secure learning environment
- Promoting healthy lifestyles and decision-making
- Partnering with our students, parents, and community to support learning and enhance the quality of education in our district

BPS Strategic Plan

In 2023, Bellevue Public Schools established five priority committees to evaluate the success of the 2018-2023 BPS Strategic Plan and recommend new strategies and actions to the Board of Education to move the district forward. The committees were comprised of board members, administrators, teachers, students, parents, and community leaders. Each priority committee reviewed stakeholder feedback collected and analyzed by the Nebraska Association of School Boards (NASB) to identify district needs. The committees also reviewed current district assessment, climate, staffing, communication, and financial data to identify additional areas for improvement. The 2024-2029 BPS Strategic Plan reflects the strategies, performance indicators, and actions needed to move the district forward and foster success for our students, staff, and school community. The district utilizes our strategic plan as a continuous improvement roadmap and a tool to monitor our progress. At each board meeting, the district administration provides the Board of Education a strategic plan priority report. These reports appear in our monthly school board agendas and highlight the actions taken by our staff members to meet the success measures outlined in the plan. The 2024-29 BPS Strategic Plan allows Bellevue Public Schools to embody our “Champions for Children” mission and fulfill the district vision of “Shaping Our Future Through Engagement, Innovation, and a Culture of Belonging.”

Strategic Plan Objectives

- To implement effective curriculum and instructional practices that support student learning, increase achievement, and promote innovative, evidence-based practices throughout the district.
- To provide appropriate social-emotional and behavioral support for all students in positive, supportive learning environments.
- To provide programs and services that allow students to reach their full potential.
- To ensure timely, professional, two-way communication that promotes student success and builds positive relationships with our community.
- To efficiently and effectively allocate resources to meet student learning needs and support strategic priorities.

Strategic Plan 2024-2029

Priority I: Instructional and Curricular Innovation

Strategy: Support the continued implementation of the district's multi-tiered system of support (MTSS) to address the academic needs of our diverse student population.

Performance Indicator 1.1: Improve core instruction and provide targeted group and individual interventions to address the academic needs of our diverse student population.

Performance Indicator 1.2: Revise and develop district curriculum aligned with Nebraska state standards to support academic, career, and multicultural education.

Performance Indicator 1.3: Align continuous improvement efforts to enhance professional practice that ensures equitable educational opportunities and student success.

Priority II: Supportive Learning Environment

Strategy: Support the continued implementation of a multi-tiered system of support (MTSS) to address the social-emotional and behavioral needs of students.

Performance Indicator 2.1: Improve social-emotional supports and targeted interventions to address the behavior needs of our diverse student population.

Performance Indicator 2.2: Expand school-based partnerships and services for the mental health needs of students.

Performance Indicator 2.3: Align continuous improvement efforts to enhance professional practice that supports students' social-emotional and behavioral needs.

Priority III: Student Programs and Services

Strategy: Increase access to programs and services that support learning and expand college and career readiness.

Performance Indicator 3.1: Expand access to alternative learning and career education programs.

Performance Indicator 3.2: Improve programming for students with disabilities.

Performance Indicator 3.3: Increase support for English Learners (EL) and High Ability Learners (HAL).

Performance Indicator 3.4: Provide programming and support to meet the needs of underserved populations and create more inclusive and equitable opportunities.

Priority IV: Engaging Our Community

Strategy: Improve communication and perceptions of BPS by engaging our students, families, employees, and the Bellevue/Offutt community.

Performance Indicator 4.1: Increase support for military-connected students and families.

Performance Indicator 4.2: Increase engagement with our diverse community of learners and families.

Performance Indicator 4.3: Increase awareness of student, school, and district success.

Priority V: Allocation of Resources

Strategy: Prioritize and secure financial and human resources to meet student needs, support strategic goals, and meet future obligations.

Performance Indicator 5.1: Recruit, hire, and retain a district staff that meets student needs and reflects the diversity of our school community.

Performance Indicator 5.2: Provide the resources to meet the educational needs of all student populations.

Performance Indicator 5.3: Increase federal and state resources to support district operations.

Performance Indicator 5.4: Explore sustainability practices that align with the district's needs.

Purple Star School Designation

In November of 2021, all Bellevue Public Schools Elementary, Middle, and High Schools were designated by the Nebraska State Board of Education as Purple Star Schools.

Signed into law in 2021, the Purple Star Schools Act recognizes schools committing to support the unique needs of military-involved students and families. To qualify, schools had to commit to the following required activities:



1. Designating a military liaison
2. Maintaining a dedicated web page for military-connected students and families
3. Maintaining a transition program led by students.
4. Offering professional development for school staff related to military-connected students
5. Creating/Doing **one** of the following:
 - Resolution from the school board showing support for military-connected families posted on the school website
 - Recognize April as Military Child Month or November as Military Family Month with relevant events being held
 - Partner with a local military installation to provide opportunities for service members to volunteer or otherwise be involved in the school

Bellevue is proud of our partnership with Offutt Air Force Base and our commitment to supporting the needs of over 2,400 military-connected students across the district. All twenty schools in the district have been designated as Purple Star Schools.



District Finances

Total District Tax Levy

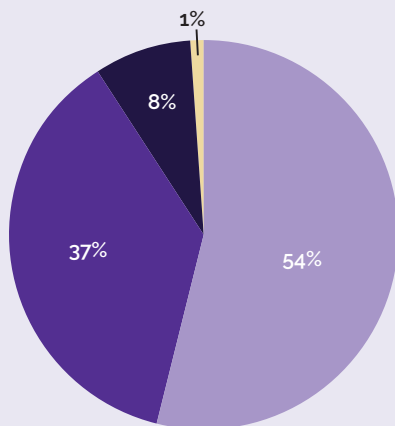
In Bellevue Public Schools, the total District tax levy is made up of the General Fund levy (1.04) and the Bond Fund levy (.12). Other district levies may include a General Fund levy override, multiple Bond Fund levies, and/or a Qualified Capital Purpose Fund levy.

Valuation Per Student

The Valuation Per Student is the total District certified valuation divided by total student membership.

School District	Total Levy	Valuation per Student
Gretna	1.35	\$ 794,875
Ralston	1.19	\$ 701,863
Bellevue	1.16	\$ 520,987
Millard	1.12	\$ 700,542
Papillion La Vista	1.12	\$ 791,653
Omaha	1.11	\$ 655,017
Springfield/Platteview	0.59	\$ 2,878,539

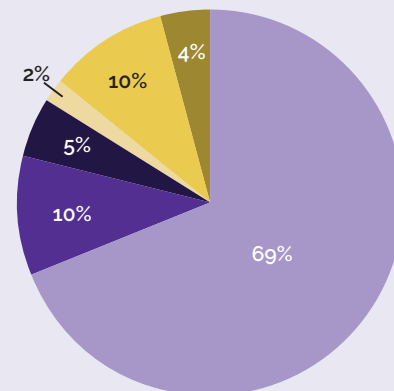
Where Does the Money Come From?



2023-2024 Revenue \$132,508,437



Where Does the Money Go?



BPS Bond Initiative

2016 BPS Bond Initiative

In 2016, our community approved a 76 million-dollar bond initiative to provide a variety of needed upgrades across the district. These upgrades include safety and security improvements in all buildings, HVAC and lighting upgrades, new roofs, a technology refresh, athletic field renovations, food service equipment, buses, and support vehicles, a new district storage, and the creation of a new career and technical education center. In the fall of 2024, the newly remodeled Frank Kumor Career Center was opened to the public. Additionally, the district began construction of a new auditorium at Bellevue West High School. The new auditorium and renovations are scheduled for completion by the end of 2025. Once completed, the district will have completed all projects associated with the 2016 bond initiative.

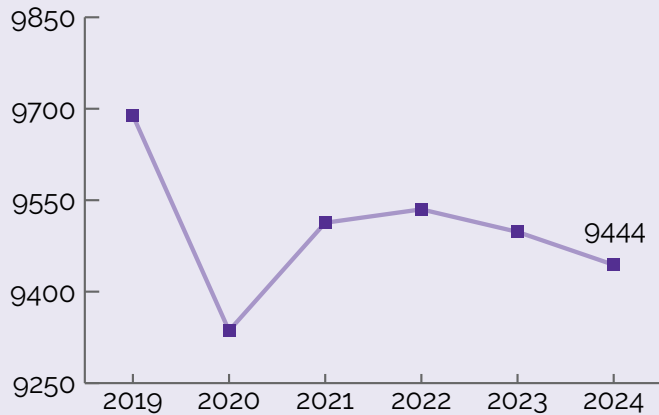
Due to a favorable and competitive market for bond purchasing over the past eight years and strategic issuing of bonds, the district has been able to secure an additional \$9.2 million dollars to expand projects while staying well below the expected tax increase originally approved in the 2016 bond. The original 2016 BPS Bond Approved Tax Rate Increase was set at 20 cents. The actual property tax rate increase for the bond is currently 12 cents.



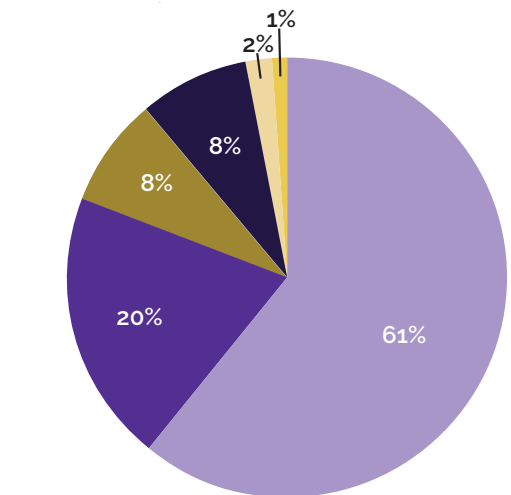
By the Numbers

Student Enrollment - Six-year Membership PreK-6

The official student count for Nebraska public school students is taken on October 1st of each year. This count is recorded by grade, gender, and race/ethnicity. Each student is counted only once by the school district in which they receive the majority of their instruction. It does not include ECC and homebased students.



Student Ethnicity



Student Demographics - Percent of Student Population

Free & Reduced Lunch



Enrollment Option



English Language Learners



Special Education



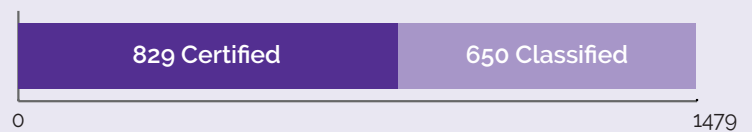
Military Connected



High Ability Learners



Staff Characteristics



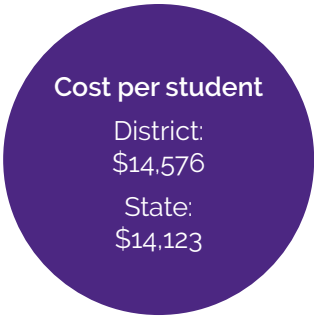
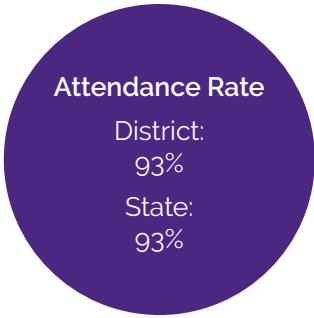
Certified Staff

Average Years of Experience

Average Experience	16.0 years
State of Nebraska	14.0 years

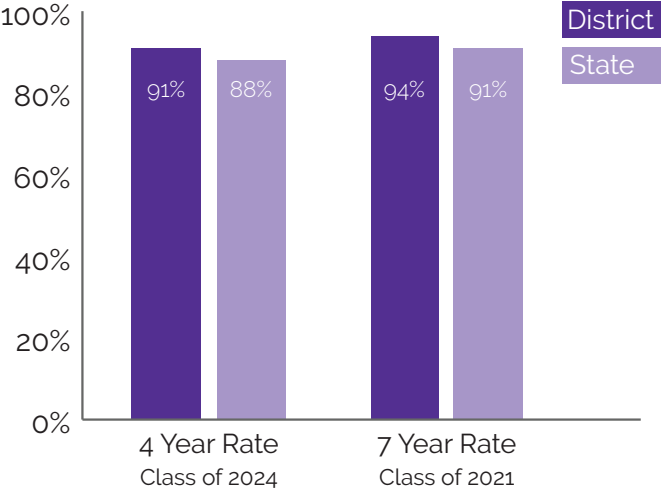
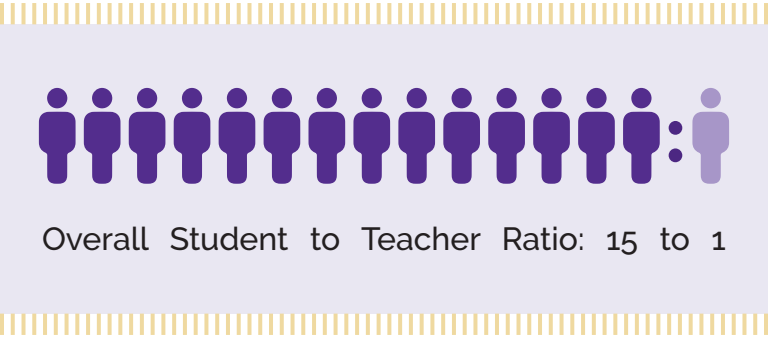
Percent with Master's Degrees or Higher

Bellevue Public Schools	76%
State of Nebraska	59%



Graduation Rates

The 4-yr graduation rate is a ratio of the number of students in the (2024) Graduation Cohort who graduate with a regular high school diploma in four years or less divided by the number of students in the Graduation Cohort, including students who graduate in the summer of the Expected Graduation Year. The 7-yr graduation rate is a ratio of the number of students in the (2021) Graduation Cohort who graduate with a regular high school diploma in seven years or less divided by the number of students in the Graduation Cohort.



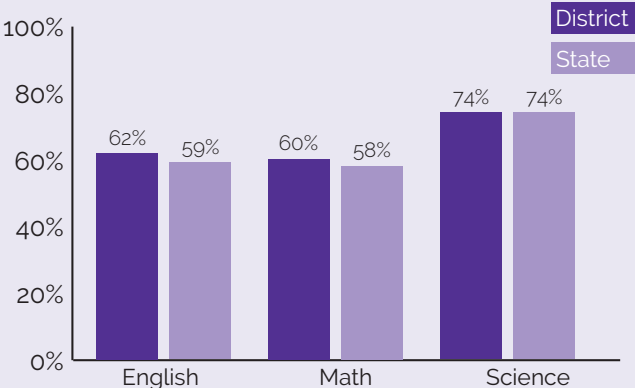
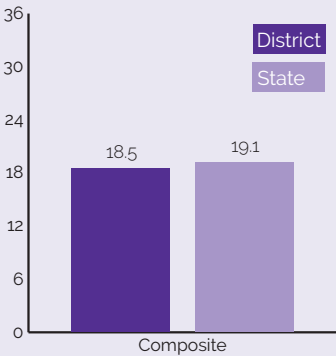
Standardized Test Results

ACT Graduate Report

2024 graduates who took the ACT as sophomores, juniors, and/or seniors under standard-time or extended-time conditions and achieved a reportable composite score. The most recent scores are used in this report for students testing more than once.

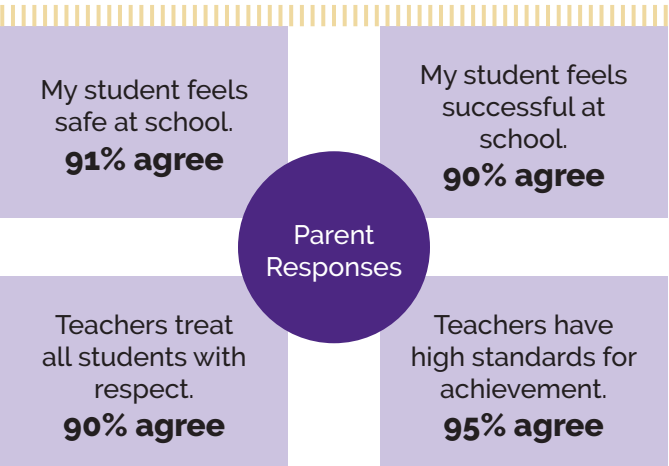
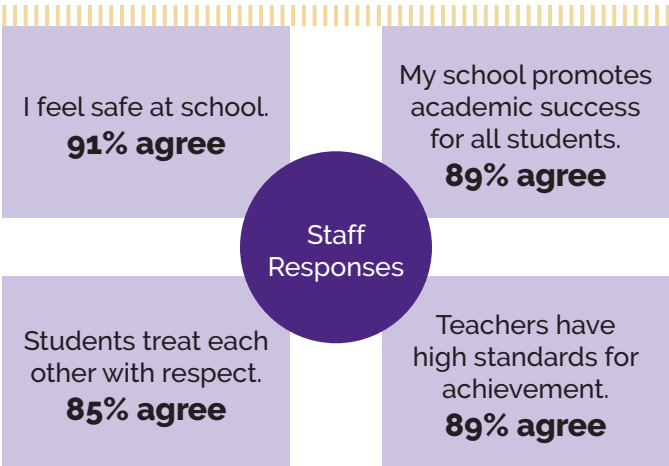
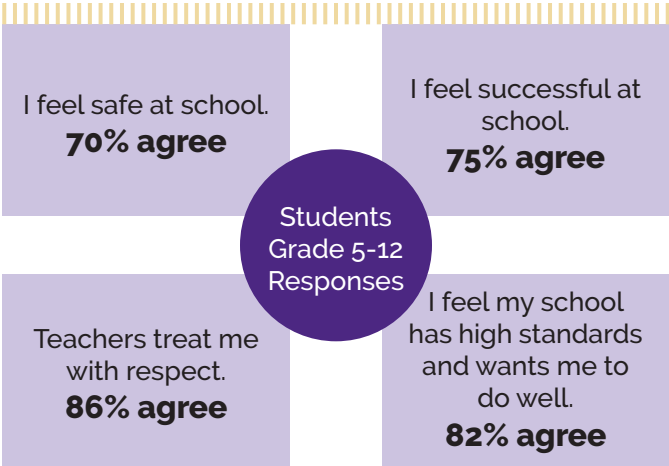
Student NSCAS Summative Assessment Scores (2023-2024)

The Nebraska Student-Centered Assessment System (NSCAS) is an adaptive statewide assessment that measures student performance against Nebraska content area standards in English language arts, math, and science for grades 3-8. NSCAS provides valuable information to educators and decision makers at all levels with the insights needed to support student learning.



School Climate Grant Feedback

In October of 2019, Bellevue Public Schools received a \$2.79 million-dollar School Climate Transformation Grant from the Department of Education. This grant has provided financial support for BPS to focus on improving school climate across all schools. As part of the grant BPS administers a School Climate Survey adapted from PBIS to three stakeholder groups: parents, students and staff. The graphics below highlight the percentages of favorable responses from the common survey questions of each group. There were 4,751 students, 552 staff, and 1,167 parents who completed the survey for the 2024 administration. Please use the QR code at the bottom of this page to access the full results for all surveys.



Scan to view the full results of the survey.

Teaching and Learning

Elementary School

Bellevue Public Schools provides 15 neighborhood elementary schools that serve nearly 5,000 students from pre-kindergarten through sixth grade. Elementary students participate in a rigorous curriculum developed by Bellevue Public Schools' teachers that aligns with Nebraska's educational standards. At the elementary level, there is an emphasis on reading, writing, math, science, and social studies. Schools provide additional classes to engage students in art, music, physical education, STEM/STEAM, social-emotional development, and library media. Additional support and services are provided for students who qualify for special education, English Learners (EL), and High Ability Learners (HAL) at all schools. Most elementary schools offer additional engagement activities through various clubs, competitions, and curriculum night(s).

Middle School

In seventh and eighth grade, Bellevue Public Schools' students attend one of three middle schools that serve nearly 1,400 students. All BPS middle school students are placed on grade-level teams to create smaller learning structures within the building. This team approach creates a nurturing, cohesive student environment. Middle School students receive core instruction in English, math, reading, science, and social studies. Additional offerings include PE & health, world language, choir, instrumental music, family sciences, and industrial technology.

High School

Over 3,000 students in grades nine through twelve attend one of our two comprehensive high schools. BPS high school students have access to over 200 courses, including a robust offering of Advanced Placement and high school/college dual credit courses. Both high schools offer co-curricular and extracurricular activities, including athletics, music, and Junior Reserve Officers Training Corps (JROTC). BPS students and teams consistently earn regional, state, and national awards and recognition in various athletic and academic competitions.



Technology



Blended Learning

To provide students with new opportunities to investigate, create, collaborate, reflect, publish, learn and grow, Bellevue Public Schools uses a Blended Learning Model. This allows students to develop skills to become empowered learners, digital citizens, global collaborators, knowledge constructors, and innovative designers. Blending learning is the combination of active engaged learning online and active engaged learning offline designed intentionally to increase student engagement and learning while fostering a culture of creativity, curiosity and personalization through student driven learning. Staff are provided Blended Learning training to support the effective utilization of iPads in the classroom as an instructional resource that enhances teaching and learning. Areas of focus for training are differentiated and include digital workflow, digital citizenship, and instructional strategies based on the staff roles and responsibilities for implementation. District-adopted core apps and digital curricular resources are also incorporated into the training provided. Training approaches include in-person workshops and virtual independent study modules, which are accompanied by implementation coaching and building instructional coaches. The priority has been for all current staff to receive the Blended Learning training. In the upcoming years, the Blended Learning instructional technology training to support one-to-one iPad implementation is embedded in the quarterly new staff induction training program and the Bellevue Public Schools Instructional Model.

One-to-One iPads

Bellevue is a one-to-one school district. Each student K-12 has access to an iPad that is used to enhance the delivery of the curriculum. All students 7-12 can utilize their devices at school or at home. Students in K-6 have access to their iPad during the school day under the direction of their classroom teacher. Regardless of the location of use, all district devices are filtered for content and monitored by district personnel.

Schoology and Core Apps

The district utilizes the Schoology Learning Management System, and all available apps utilized in the classroom or home setting can be found on our website under the Technology Department tab. All parents, guardians, and students have access to PowerSchool to access grades, attendance, and other student information.

Programs

Academic Center of Excellence (A.C.E.)

The Academic Center of Excellence (A.C.E.) alternative program meets the needs of BPS students who have yet to be successful in the traditional education environment. The A.C.E. program is located at the BPS Support Center at 2820 Arboretum Drive and accepts students in grades 9-12. Students are placed into the program through a referral process initiated at the school level. The program targets students meeting multiple at-risk criteria from the following, which may lead to dropping out of school: credit deficiency; poor attendance; social/emotional or behavioral issues; challenging life issues; substance abuse; traumatic events; teen pregnancy.

Frank Kumor Career Center

In 2024, the district remodeled the Frank Kumor Career Center. The grand opening was held in October with local, state, and national dignitaries in addition to students, staff, and community members in attendance. Bellevue Public Schools offers various career and professional studies programs at the Frank Kumor Career Center, named after long-serving School Board Member and supporter, Mr. Frank Kumor. These programs enhance high school students' education with real-life and relevant learning experiences in collaboration with local businesses, non-profits, and industry professionals at one central hub. All coursework allows students to earn dual enrollment or industry certification credit through Metro Community College and Doane University. The career center building houses the BPS Automotive Maintenance Academy, BPS Health Science (CNA) Academy, BPS Educational Career Academy, and the BPS Aviation Academy. The Frank Kumor Career Center is located at 2812 Arboretum Drive.



Scan for
a video of
the career
center.



Special Education

Bellevue Public Schools believes that children are served best in general education classrooms where they can develop peer relationships and gain exposure to the core curriculum. The Special Education Department works to prepare each child from birth through age 21 to contribute to their communities in meaningful and positive ways by providing specialized instruction, allowing for individual differences and learning styles, and developing independence.

Birth-3 years old Services

Bellevue Public Schools provides Birth-3 years old services in-home or at private/community child centers. The program offers families the following support services as needed:

- Family service coordination
- An early childhood special education teacher
- Speech-language pathologist
- Physical therapist
- Occupational therapist
- Teachers of the deaf/hard of hearing
- Teachers for the visually impaired

Children who qualify are served based on an Individualized Family Service Plan (IFSP). Services are delivered using a Primary Service Provider (PSP) Model. The PSP Model consists of a team of professionals who work together to support families and caregivers. Children must live within the BPS' attendance area to receive services.

Preschool

Bellevue Public Schools' Preschool program serves children who are four years of age (by July 31). The preschool programs serve children qualified for special education through an evaluation process and have a verified educational disability with a current IEP. The program also serves targeted Title 1 eligible students. Most BPS Elementary Schools have a preschool program. BPS will place identified students in elementary attendance zones without programs into a program at one of the district's 12 preschool sites.

CHAP Center

The CHAP Center provides level III services to BPS students who need an intensive, alternative educational setting. Only an IEP team may place a student at the CHAP Center. CHAP's daily programming includes individual educational planning that is trauma-informed with a therapeutic approach to address social and emotional skills. Components of the daily program include academic content, IEP implementation, daily life skills, and employability lessons under the structure of PBIS. Specific behavioral lessons focus on mindfulness, distress tolerance, emotional regulation, and interpersonal effectiveness skills.

Bellevue Expanding Student Transitions Program (B.E.S.T.)

Bellevue Public Schools established the B.E.S.T. Program in 2011 to serve the transition needs of developmentally disabled young adults ages 18 to 21. This program emphasizes skill development in functional academics, personal management, motor development, vocational development, communication and social skills, and independent living. According to their Individual Educational Program (IEP), students are taught the skills needed for competitive employment, volunteer activities, or sheltered workshops. The B.E.S.T. Program's goal is to assist in a smooth transition from school to the community.

Project SEARCH at Nebraska Medical Center Bellevue

The Nebraska Medicine Bellevue Project SEARCH program provides unpaid internship opportunities to help individuals with developmental disabilities gain knowledge and skills that could lead to paid employment. This program targets students ages 18-21 who would benefit from total immersion in a business setting. Total workplace immersion facilitates a seamless combination of classroom instruction, career exploration, and hands-on training through three 10-week internship site rotations. Project SEARCH interns gain experience in various settings: environmental services, general nutrition, facilities, access services, sterile processing, administrative support, and outpatient rehabilitation.

Bellevue Public Schools Early Childhood Center

The Bellevue Public Schools Early Childhood Center, located at 2600 Arboretum Drive, is intended for children birth to eight years old and their parents. The center is open to families in the BPS' attendance area or active duty military families. Parents can check out toys and resources to take home to support the development and learning of their children. The parents must accompany their children while participating in the center's activities. The program provides an on-site early childhood teacher to support children and families.

Child Find

"Child Find" refers to the process of locating, identifying, and evaluating children with disabilities to ensure that they receive services to which they are entitled. Children and youth, ages birth to 21 living within the BPS District, who are suspected of having a disability may be referred for a possible evaluation to determine if they are eligible for special education services. Please contact a building principal to refer your child currently enrolled with BPS (preschool-Grade 12). If your child is birth through age five and not presently enrolled with BPS, families should contact the BPS Early Childhood Office at 402-293-4941.

Unified Sports

In partnership with Special Olympics of Nebraska, BPS promotes social inclusion through shared sports training and competition experiences. Unified Sports join people with and without intellectual disabilities on the same athletic team. A simple principle inspired it: training and playing together is a quick path to friendship and understanding. BPS currently offers unified soccer at middle schools. High school students can participate in unified bowling and unified track.

English Learner Program (EL)

The Bellevue Public Schools English Learner students receive services from EL endorsed teachers at their home school. The district provides instruction and support to students who are not yet proficient in English. Students are supported in groups by their language ability in listening, speaking, reading, and writing to succeed in the content areas. EL students receive services primarily in the general education classroom and full access to all curricular and extracurricular activities. All cultures and languages are welcomed and valued. Additional programs, such as PADRES and a Family Literacy Center, are offered for EL parents to promote connections between home and school.



National Center for Family Literacy Program

Bellevue Public Schools received the National Center for Family Literacy grant (NCFL) in August 2021. Bellevue Public Schools became a Nebraska Legacy Family Literacy site in August 2024. The NCFL's mission is to eradicate poverty through education solutions for families. NCFL engages families, educators, administrators, and advocates to promote family education solutions and reduce educational inequalities. BPS works with families and utilizes resources within the community to provide literacy strategies, programming, and resources for students and families. The development of a BPS Family Literacy Center will engage multiple generations of families, particularly English learners, in learning together with a holistic approach to create a stronger impact and greater success for families. BPS Family Liaisons work with the parents to develop leadership skills within their community. BPS has created a district hub site to recruit PreK-6 families to offer training for parents regarding how to be the primary teachers for their children and full partners in education. BPS has a partnership with Metropolitan Community College (MCC) to offer adult English language classes for parents. The purpose of this program is to remove barriers while supporting parents as partners in their children's education by developing welcoming culturally and linguistically responsive environments.

STEM

The district strives to integrate STEM learning throughout our curriculum and allows students to develop STEM skills through collaboration, creativity, communication, and critical thinking. Other STEM activities include LEGO and VEX robotics, CyberPatriot security teams, school gardens, aquaponics, STEM nights, and Science Olympiad programs.

High Ability Learner (HAL)

The Bellevue Public Schools HAL program serves identified gifted and talented students who exhibit above-average abilities, have a commitment to initiated tasks, and possess problem-solving and creative abilities. HAL program services include differentiated opportunities such as curriculum acceleration, grade level acceleration, subject acceleration, tiered and replacement learning experiences, inclusive co-teaching, pull-out instruction, supplemental programs, curriculum compacting, external offerings for enrichment, peer grouping, career exploration, internships, advanced placement, and independent study. HAL services are specifically designed to support affective needs and challenge academically advanced learners by providing experiences that require critical thinking, problem solving, creative thinking, study skills, communication, and persistence in the face of challenges.

Advanced Placement & Dual Enrollment

BPS continues to expand access and opportunities for students to engage in rigorous courses through advanced level, Advanced Placement (AP), and dual enrollment opportunities. In 2023-24, over 1200 students took advanced level or AP courses, and 745 students took 1995 dual enrollment classes, earning over 9500 college credit hours through Metro Community College, University of Nebraska-Omaha, and Doane University.

Metro Career Academy

Bellevue Public Schools students can access the Metropolitan Community College (MCC) High School Career Academy program at a minimal cost. The MCC program allows high school juniors and seniors to learn specific career knowledge and skills before high school graduation. By participating in year-long MCC Career Academies, students can explore a career field and even start a degree and job while earning up to 37 college credit hours.

UNMC Health Alliance

The UNMC High School Alliance allows high school juniors and seniors to take college-level courses in preparation for careers in health care. The program, held during the school year, provides unique hands-on learning experiences, including courses in infectious diseases, anatomy, and medical decision-making taught by UNMC faculty on the Bellevue campus.

Henry Doorly Zoo Academy

The mission of Zoo Academy is to provide students with knowledge and career explorations relating to life sciences through authentic STEM (science, technology, engineering, and math) experiences at Omaha's Henry Doorly Zoo & Aquarium. Zoo Academy is an excellent model of forming successful collaborations between an informal science education organization and school districts.

Air Force Junior Reserve Officers' Training Corp (JROTC)

The Air Force Junior Reserve Officers' Training Corp (JROTC) program's mission is to develop citizens of character dedicated to serving their nation and community. The JROTC program promotes citizenship, community service, personal responsibility, character, and self-discipline. The program achieves this through classroom education in air and space fundamentals and hands-on learning opportunities in several challenging extracurricular activities.

Co-curricular Organizations & Clubs

Students can participate in various co-curricular organizations and clubs to extend learning opportunities beyond the classroom settings. School staff also sponsor non-curricular clubs that allow students to engage with other students who share an interest or passion. BPS currently offers over 40 co-curricular organizations and clubs at the secondary level. Many co-curricular organizations allow students to participate in curriculum-related competitions at the local, state, and national levels.

Extra-curricular Activities

Bellevue Public Schools provides students access to over 20 extracurricular programs. These programs include team sports, individual sports, and competitive fine arts. BPS athletic and fine arts students regularly win state championships and compete successfully in regional and national competitions. BPS believes that students who participate in extracurricular programs are more connected to school and community life, resulting in better academic outcomes and engagement in school.



Grant-funded Programs

Department of Defense Educational Activity (DoDEA)

The Department of Defense Education Activity (DoDEA) is a field activity of the Office of the Secretary of Defense. DoDEA's mission is to plan, direct, coordinate, and manage the education programs for eligible dependents of U.S. military personnel and civilian personnel of the Department of Defense. DoDEA is committed to ensuring that all school-aged children of military families are provided a world-class education that prepares them for postsecondary education and/or career success and to be leading contributors in their communities as well as in our 21st century globalized society. BPS has been awarded five million dollars in competitive grants from DoDEA since 2018.

Project Shape Up

In 2024, Bellevue Public Schools was awarded a \$2,000,000 Department of Defense Education Activity (DoDEA) competitive grant for Project SHAPE UP. Project SHAPE UP aims to improve overall physical activity, health, and well-being for K-12 students at military-connected schools by providing staff training, equipment, and supplies for school health and PE programs. This project will improve instruction, increase engagement, and encourage an active lifestyle for our students.

Grant funds will improve staff access to professional learning opportunities and increase family engagement and community outreach activities. Each school in the district will receive new PE equipment and supplies to incorporate into their classrooms. Grant funds will provide each elementary school with an outdoor fitness course and indoor traverse climbing walls. Elementary PE teachers will integrate these new structures into our current curriculum. The district will also use grant funds to install an inclusive playground at two elementary schools to support the needs of students with severe disabilities. Middle schools will receive new PE equipment, supplies, and an outdoor fitness gym. High schools will receive funds to purchase new equipment and supplies for each school's various physical education classes.



Operation Taking Flight

In 2023, Bellevue Public Schools was awarded a competitive grant of \$2,000,000 from the Department of Defense Education Activity (DoDEA). The 5-year award will be used to increase Math Proficiency for all students and initiate a BPS Aviation Academy. Grant funds are being utilized to improve math performance by funding costs associated with K-12 curriculum development in alignment with the new Nebraska College and Career Ready Standards for Mathematics. Grant funds have also been utilized to initiate the BPS Aviation Academy at the Frank Kumor Career Center. The new aviation courses allow students to explore the aviation industry by introducing them to concepts related to flight, aircraft systems and performance, the flying environment, flight planning, and drones. The program also focuses on careers in aviation and allows students to earn industry certifications, including the Private Pilot Knowledge Test and Part 107 Remote Pilot Knowledge Test.

Project Career Launch

In 2020, the district received a \$1,500,000 grant to fund Project Career Launch. The grant has expanded student access to dual credit courses in health sciences and supports district-wide efforts to provide reading intervention and phonics resources for students in grades K-12. The grant funds assisted the district in initiating a dual enrollment Health Science Academy at the Frank Kumor Career Center. Project Career Launch has also provided both high schools with the needed technology, equipment, and support to transition current health science classes to dual enrollment through Metro Community College. Students in the health science courses at both high schools and the BPS Frank Kumor Career Center have the option for dual enrollment at no cost due to the funds provided by the grant.

IMProving Access, Curriculum, Training for World Languages

In 2021, the district was awarded a \$2,400,000 IMPACT-WL grant to provide our students and staff with quality world language curricular resources and increase our students' access to dual enrollment opportunities in high school. The grant provides summer language programming for elementary students and expands professional development opportunities for our world language teaching staff. Through this grant program, BPS will build the district's capacity to increase enrollment in world languages and transition most upper-level language courses to dual enrollment opportunities through Metro Community College and the University of Nebraska Omaha. Since the program started, hundreds of students have earned over 3,000 college credit hours in world languages at no cost to students. Additionally, many of our world language teachers have earned master's degrees and language certifications to offer additional dual enrollment opportunities for our students.



Partnerships



Since 1985, the Bellevue Public Schools Foundation has worked to improve the lives of students and educators by providing funding and support for special projects and initiatives within the school district that would otherwise not be possible. BPS Foundation uses donations, corporate sponsorships, and income from the Kids' Time before-and-after school program to fill funding gaps within the District. The BPS Foundation's mission is to accelerate educational achievement for ALL students through the effective mobilization of innovation, relationships, and resources. Over the past two years, the Foundation has provided over \$500,000 of financial support to the district through classroom grants, playground donations, and scholarships for graduates.



The Bellevue Public Schools Foundation Kids' Time is a before-and-after child care program for kindergarten through sixth-grade students. The program provides quality child care in each of Bellevue's 15 elementary schools under the guidance of trained caregivers in a structured and fun atmosphere. Proceeds from the Kids' Time program help support Bellevue Public Schools Foundation projects contributing to the education and success of BPS students. Kids' Time is licensed through the Nebraska Department of Health and Human Services (DHHS) and complies with all standards and regulations. To learn more, please contact the BPS Foundation at 402-827-1858.



Bellevue Public Schools is one of eighteen districts receiving direct support from ESU 3 located in La Vista. Educational Service Units provide services for participating school districts, including staff development, technology, instructional materials, and purchasing support.



Bellevue Public Schools partners with Metro Community College (MCC), the University of Nebraska Omaha (UNO), and Doane University to provide our high school students the opportunity to earn

dual enrollment credit at a reduced cost in various courses and career education fields. Bellevue students participate in the Metropolitan Community College Career Academy program through our partnership with MCC. The MCC High School Career Academy offers over 20 programs of study at select MCC campuses and at Bellevue Public Schools' Frank Kumor Career Center. The program allows our high school juniors and seniors to learn specific career knowledge and skills before graduation.



MOEC serves as a forum and community for education professionals and is a catalyst for identifying high-priority issues common to member organizations and addressing these issues through joint task forces and projects. Through the consortium, BPS staff members collaborate with our surrounding school districts to share and learn best practices that support the needs of our students and staff.

Connect with us

We'd love to hear from you! You can find us on the web at www.bellevuepublicschools.org or on social media:



www.facebook.com/BellevuePublicSchools



www.instagram.com/bellevueschools_ne



www.linkedin.com/company/bellevue-public-schools-nebraska



www.threads.net/@bellevueschools_ne



<https://x.com/BellevueSchools>

There's an app for that!

The BPS app is available for FREE on iPhone and Android devices.

To download the free app:

1. Open the app store on your phone (App Store, Google Play, etc.)
2. Search for Bellevue Public Schools
3. Click install and begin download



Scan the QR code to download the BPSNE app.



Notice of Non Discrimination

In compliance with Title IX of the Education Amendments of 1972; Title VI of the Civil Rights Act of 1964, as amended by the Equal Employment Opportunity Act of 1972; Section 504 of the Rehabilitation Act of 1973; the Bellevue Public Schools shall not discriminate on the basis of sex, age, race, color, national origin, religion or disability in the educational programs or activities which it operates, and provides equal access to the Boy Scouts and other designated youth groups.

It is the intent of the Bellevue Public Schools to comply with both the letter and the spirit of the law in making certain discrimination does not exist in its policies, regulations and operations. Grievance procedures for Title IX, Title VI, and Section 504 have been established for students, their parents and employees who feel discrimination has been shown by the District.

Specific complaints of alleged discrimination under Title IX, Title VI, and Section 504 (disability) for staff should be referred to the Executive Director of Personnel Dr. Sharra Smith (sharra.smith@bpsne.net). Specific complaints of alleged discrimination under Title IX, Title VI, and Section 504 (disability) for students should be referred to the Director of Student Services Mr. Rodney Brown (rodney.brown@bpsne.net). Reach either at 2600 Arboretum Drive, Bellevue, NE 68005, (402) 293-4000.

Title IX, Title VI, and Section 504 complaints can also be filed with the Office for Civil Rights, U.S. Department of Education, One Petticoat Lane, 1010 Walnut Street, Suite 320, Kansas City, MO, 64106, (816) 268-0550.

All students attending Bellevue Public Schools may participate in education programs and activities, including but not limited to health, physical education, music and vocation and technical education, business and office education, etc. regardless of race, color, national origin, religion, age, disability or sex.

2024 Annual Report

The 2024 Bellevue Public Schools Annual Report was developed as required by the Nebraska Department of Education: Rule 10, Regulations and Procedures for the Accreditation of Schools.



Bellevue Public Schools
2600 Arboretum Drive
Bellevue, NE 68005
402-293-4000
www.bellevuepublicschools.org